

Other Projects

● Livelihood through livestock

Promotion of livestock healthcare practices, establishing a network of community Animal Health Workers, conservation of native breeds, promotion of indigenous technology, supplementing rural/tribal Livelihood.



Partner	Location	Project Outreach	
		Blocks	Families
GALVmed	Mayurbhanj, Odisha	12	1.92 Lakhs

● Skill building for girls

Empowering women and girls to achieve economic independence through building their capacity on various IGP like Rural marketing, Basic computer training, Sewing training and Nursing assistant training. Through the project we have focused on women and girls to prepare themselves for future challenges by improving their employability and providing them better opportunities to choose their preferred livelihood. This will also help to generate local employment opportunities for the rural women/girls.



Partner	Location	Project Outreach	
		Blocks	Families
Rhema for the Nation, US	Odisha	1	275 girls/young widows

● Shaping future of youth

Training and capacity building on diversified career options and Career counselling that will help the rural youth in selection of suitable career. The project helps the rural youth to channelize their energy in positive direction to build their career. The project will help to motivate youth towards entrepreneurial activities and to choose their career in different organizations and institutions.



Partner	Location	Project Outreach	
		Blocks	Families
UNICEF, US	Odisha	1	150 youths

PARTNERS



Registered Office:

Nua-Odapada, Hindol Road, Dhenkanal, Odisha-759019

Field Offices:

- **Telangana:** Shankar Nagar, Siddipet, Telengana-502103
- **Odisha:** Rajghat, Balasore, Odisha- 756030
- **Karnataka:** 132/1, Pump House Road, Ulugulli Village, Suntikoppa, Kushalnagar, Kodagu - 571237

Reach us at

Website: www.iswar.org.in
Mail: info@iswar.org.in
Mobile No: 9827721193



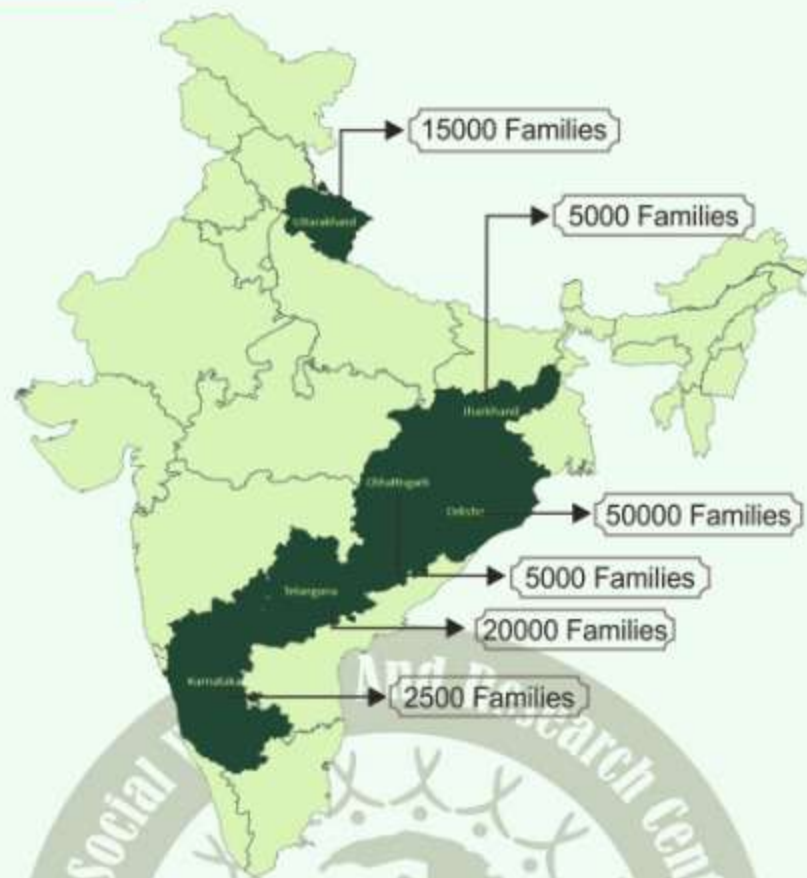
INTEGRATED SOCIAL WELFARE AND RESEARCH CENTRE



Corporate Office

L-8/19 – Panchasakha Nagar, Near ITER College
Jagamara, Bhubaneswar, Odisha-751019
Grievance Cell No-0674-7960642

OUTREACH



ABOUT US

Integrated Social Welfare and Research Centre (ISWAR) a non-profit organisation, registered under Societies Registration Act, is established in the year 1994. ISWAR has the prime focus to work in the direction of improving the inclusive quality of lives of the resource poor families. It is involved in a wide thematic spread ranging from Climate Action, Natural Resource Management, Livelihood Promotion, Value Chain Development, Health, Education and Gender Mainstreaming.

Our Vision: A sustainable, equitable and ecologically viable society where people live with dignity and peace.

Mission: Promoting and Protecting the life, livelihood, environment and natural resources through, empowering, educating and capacity building of the society.

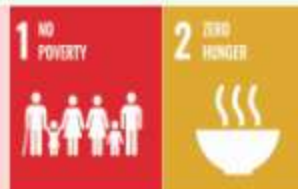
Principle: Improve the life, livelihood, environment, and dignity of the socially, economically and culturally deprived community.

CORE COMPETENCIES (Working towards SDGs)

● **Climate Change**
Acting today for a better tomorrow



● **Livelihood**
Creating hunger free Society



● **Disaster Management**
Building a hazard resilient world



● **Skill Development**
Empowering people for economic and social change



● **Education, Health and Sanitation**
Investing in education and health for a just society



● **Social Safety and Security**
Counting towards a thriving community



Major Ongoing Projects

1. Sustainable Rice Cultivation Through Water Management

The project aims to implement a sustainable approach for paddy cultivation, using less water i.e., Alternate Wetting and Drying (AWD) by involving the local farmers. This will lead to significant reduction in water demand for irrigation and also improve the water table. The adaption of AWD through water savings will also lead to monetary savings of the farmers through reduced electricity and water bills improving the income and overall quality of life of farmers. AWD practice helps in significant reduction in methane gas emission from paddy fields which is a major contributor to GHG emission and climate change.



Partner	Location	Project Outreach	
		Area (Acres)	Families
Cquest Capital	Odisha and Telangana	25000	20000

2. Kodagu Coffee with Nature

The project "Kodagu Coffee with Nature" is designed by ISWAR and supported by CSR of Coca-Cola. The project aims to develop a sustainable coffee value chain owned, managed and driven by the local coffee planters/farmers. The project in all its activities tries to improve and protect the environment of the highland. The major objectives of the project are:



- To develop a Farmer Producer's Organization (FPO) of the small holders' coffee planters/farmers.
- To develop a system for collective procurement, processing and marketing of coffee.
- To create a win-win business model for the industry and farmers
- To initiate the process of introduction of improved varieties of Robusta
- To increase the farmers income from coffee plantation.
- To build the capacity of local youth with a focus to women on coffee farming and allied activities.

Partner	Location	Project Outreach	
		Area (Acres)	Families
Coca Cola	Coorg, Karnataka	5000	1000